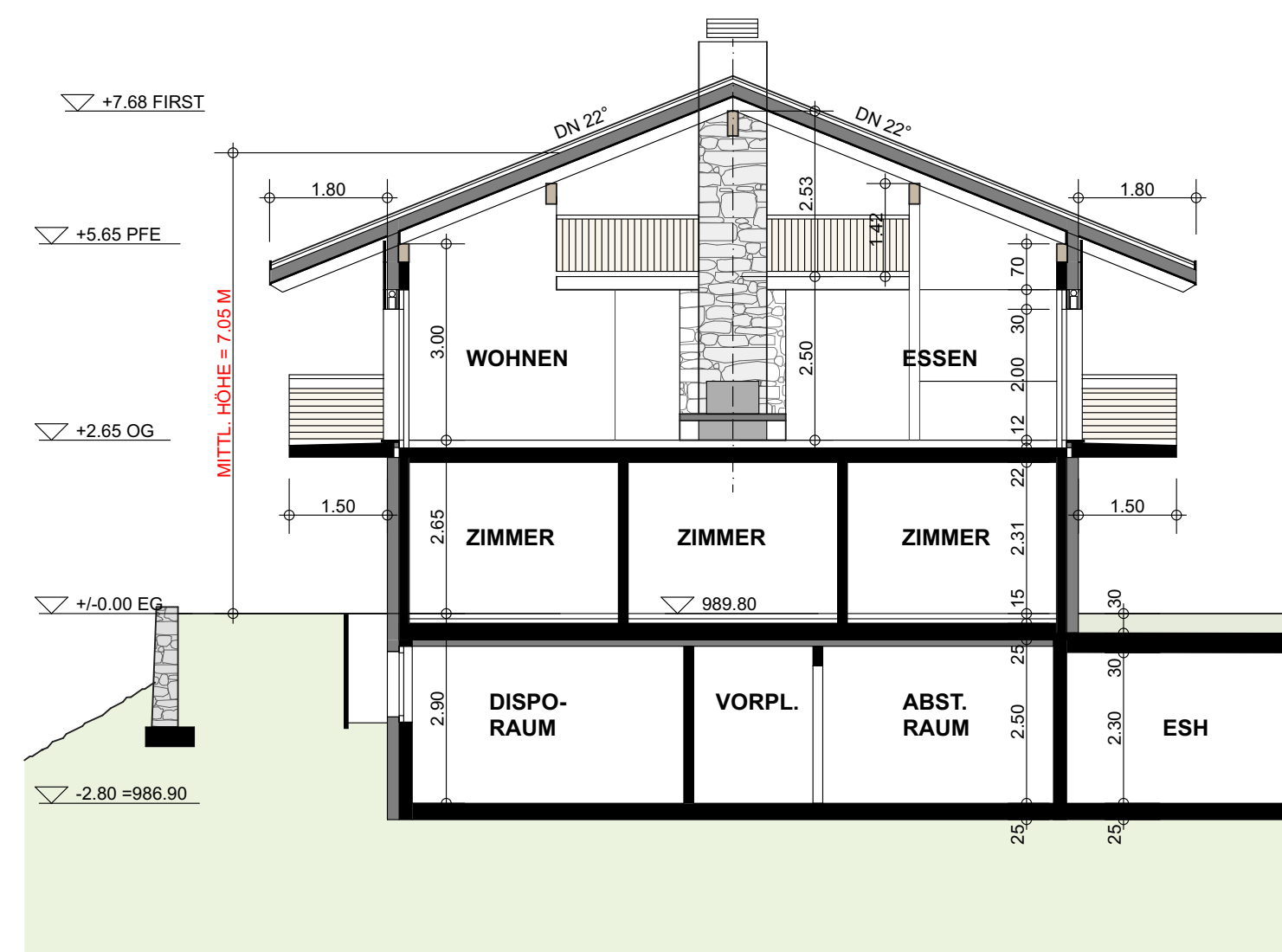


REV. BAUEINGABE

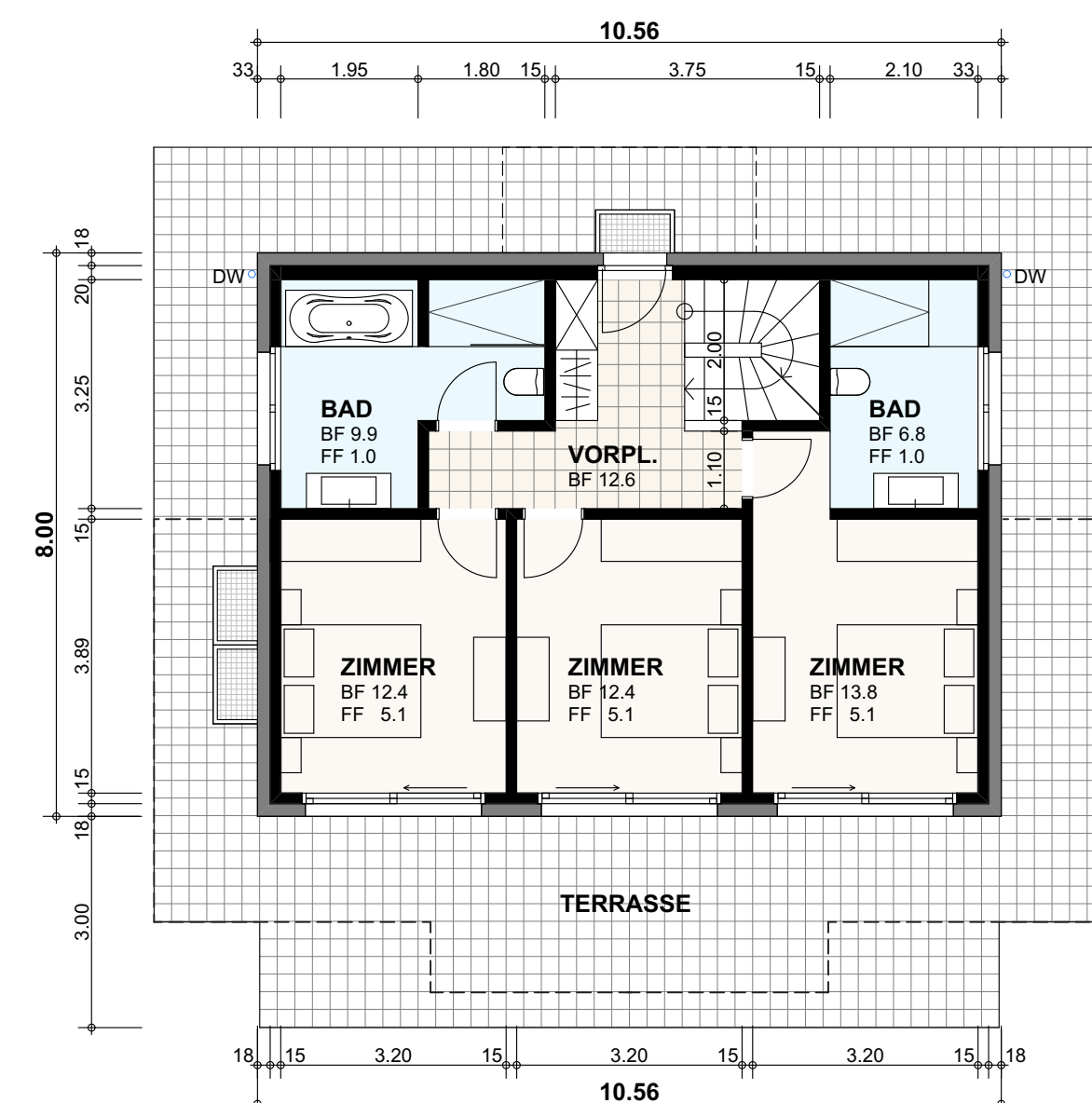
DIE BAUHERREN / GRUNDEIGENTÜMER:

DER ARCHITEKT:



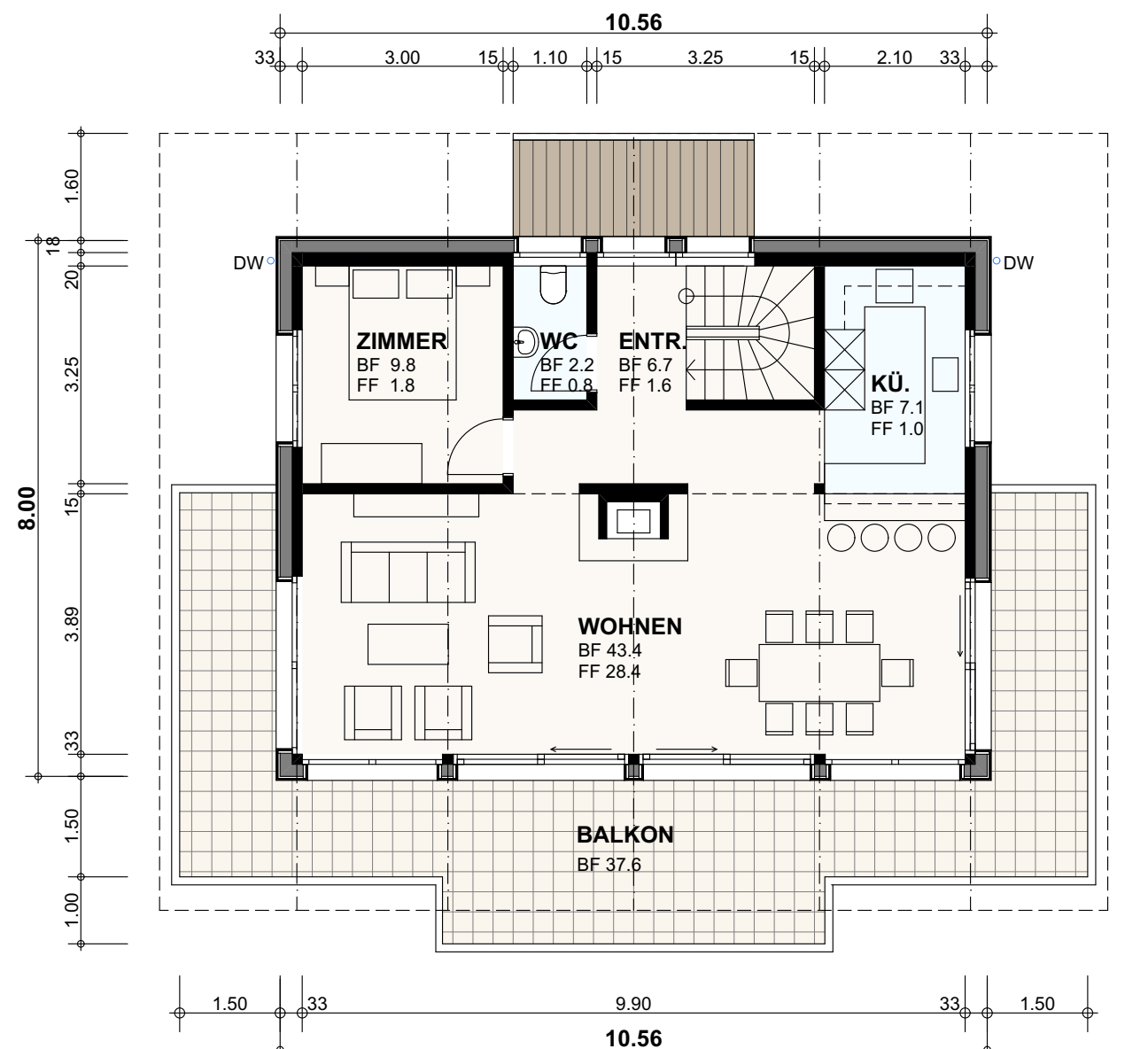
QUERSCHNITT H 1+2

GEBÄDEVOLUMEN = 595.6 m³



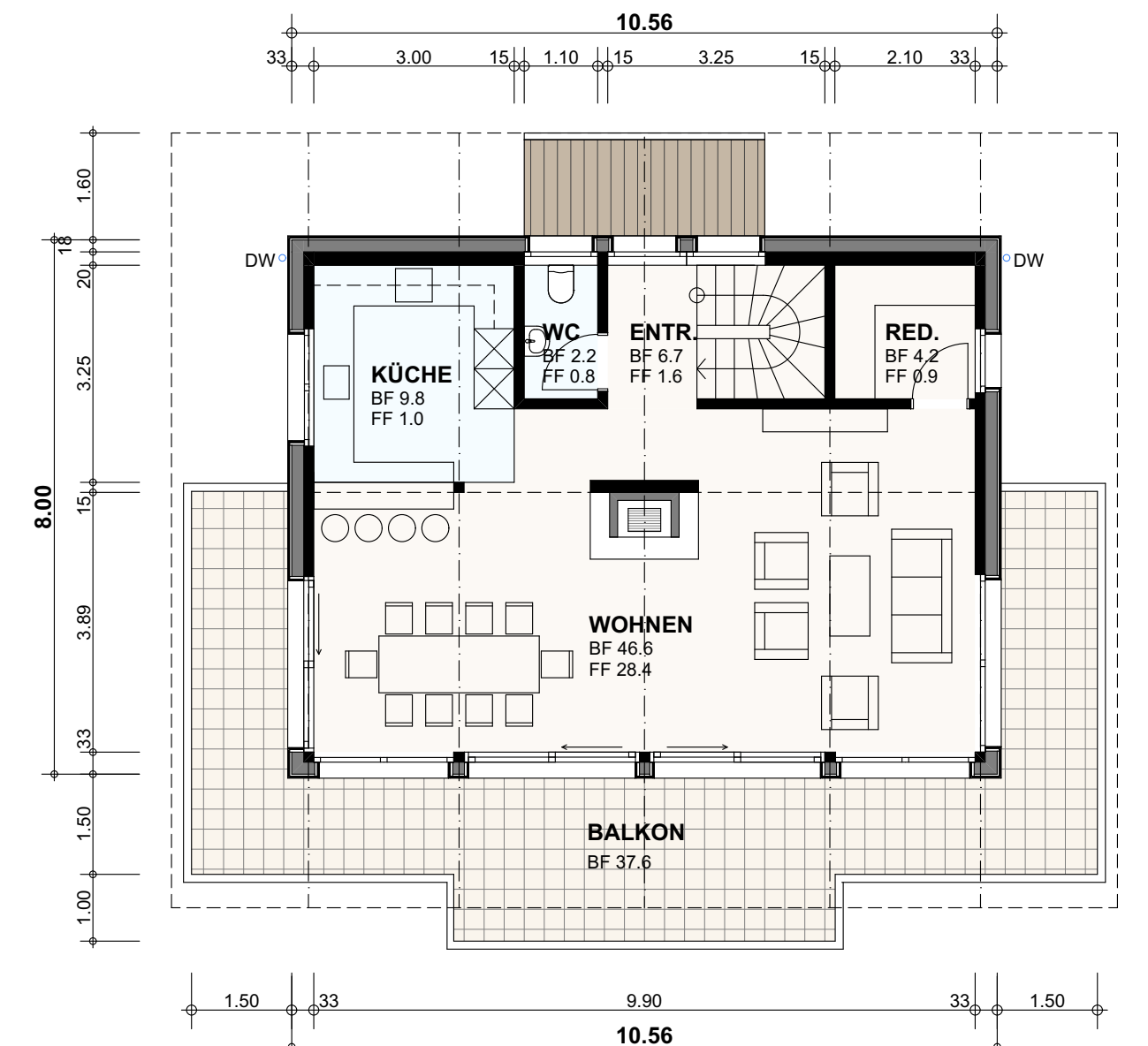
ERDGESCHOSS

HNF 67.9 m²



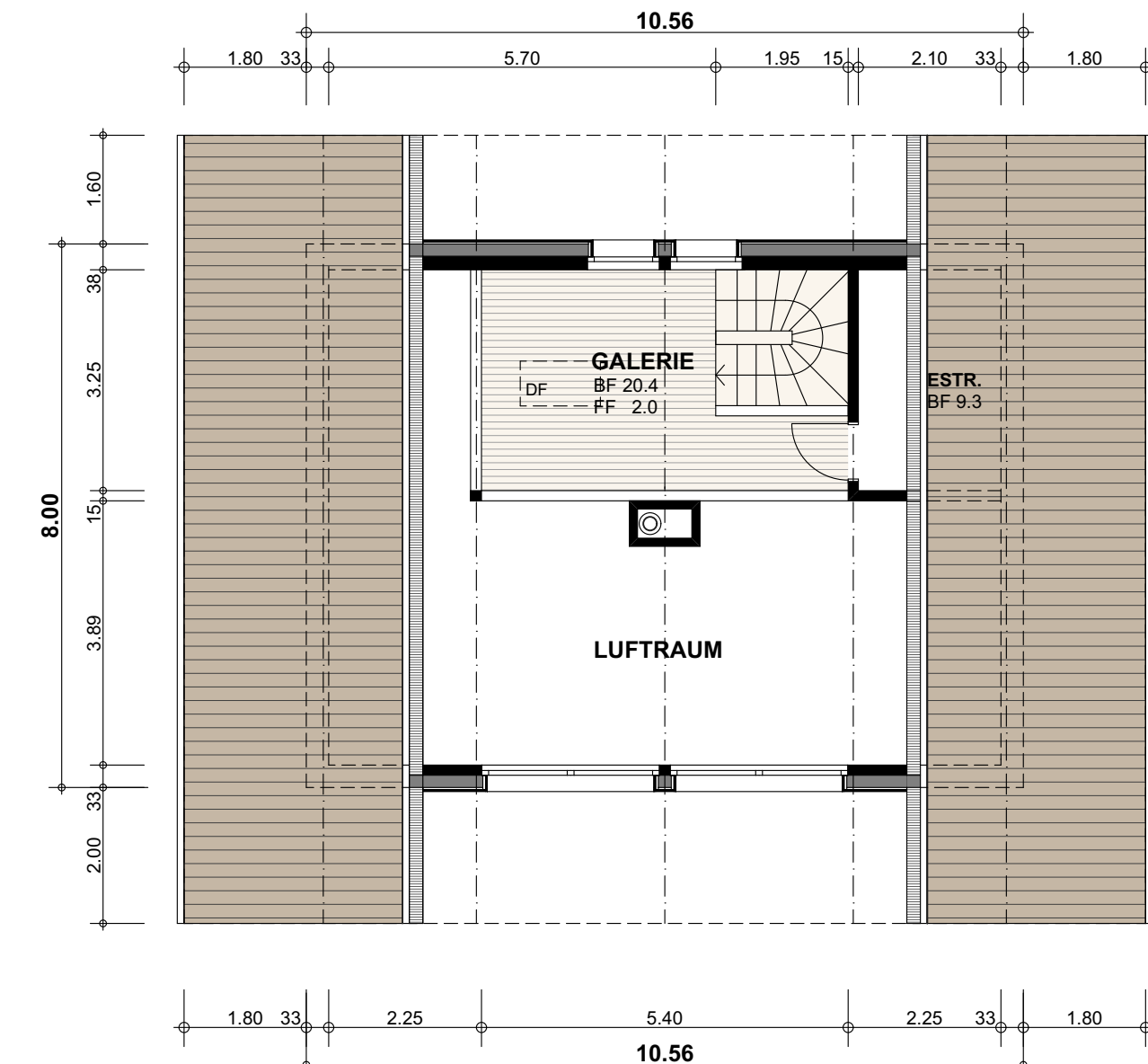
OBERGESCHOSS / HAUS 1

HNF 69.2 m²

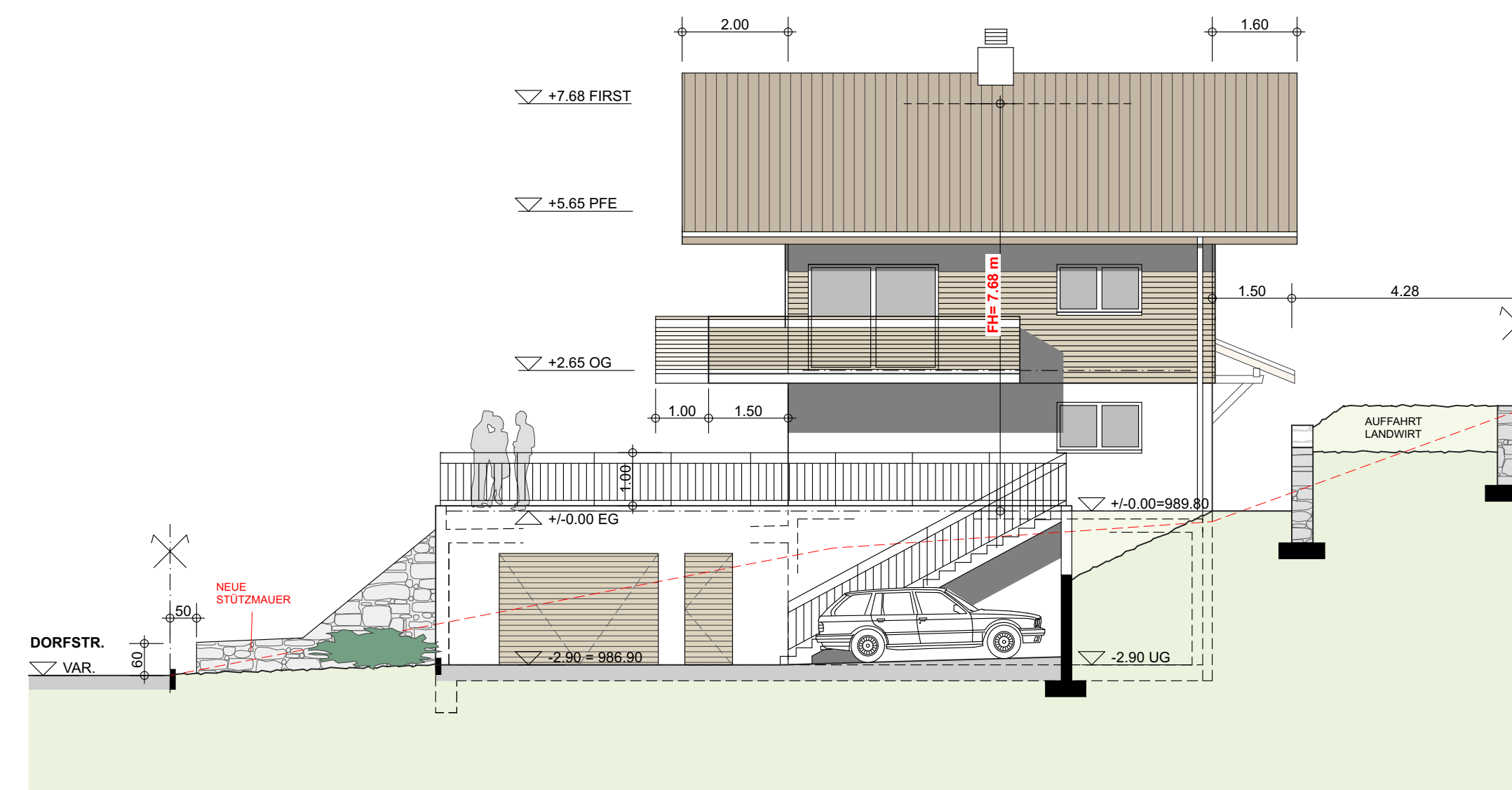


OBERGESCHOSS / HAUS 2

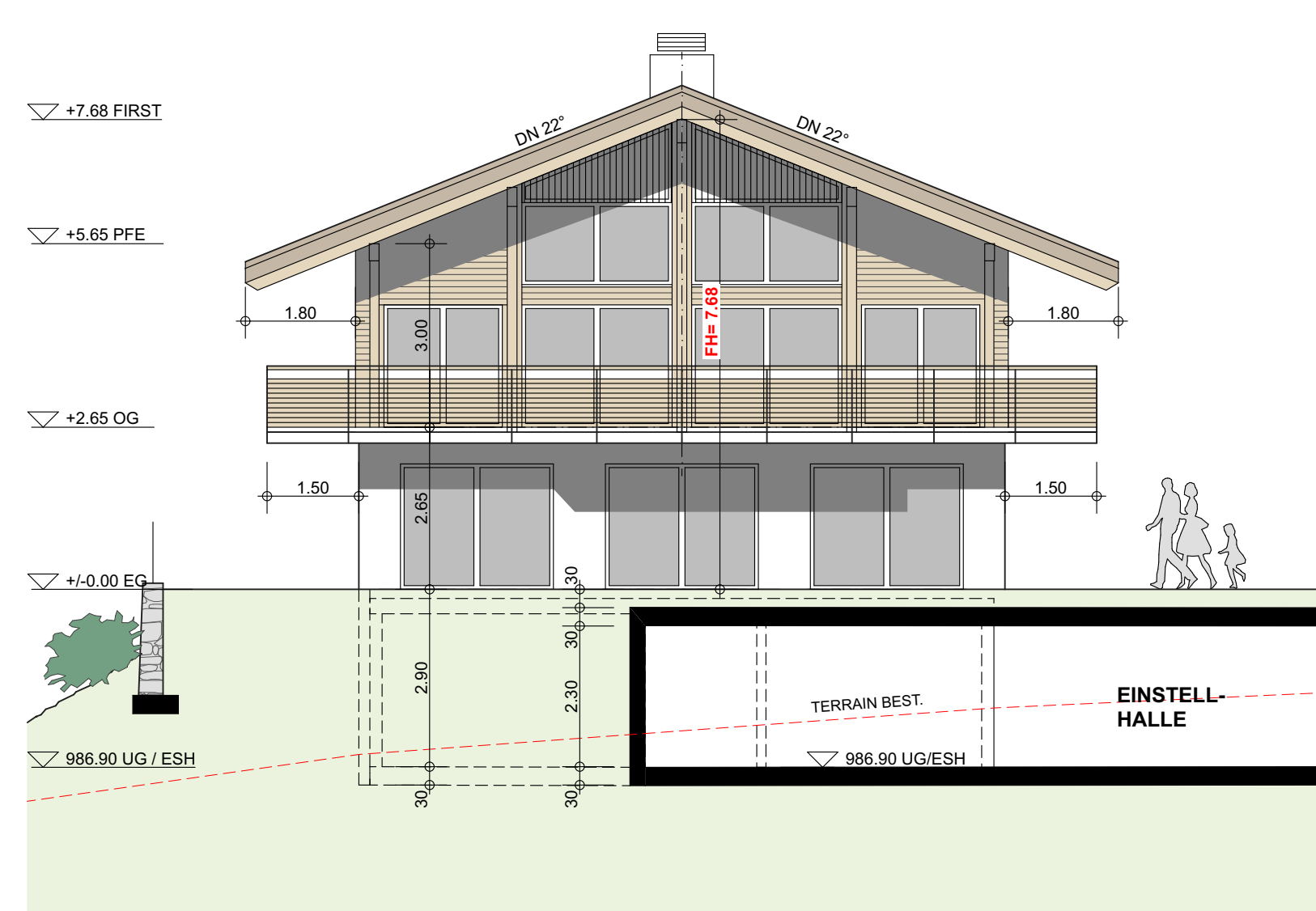
HNF 69.5 m²



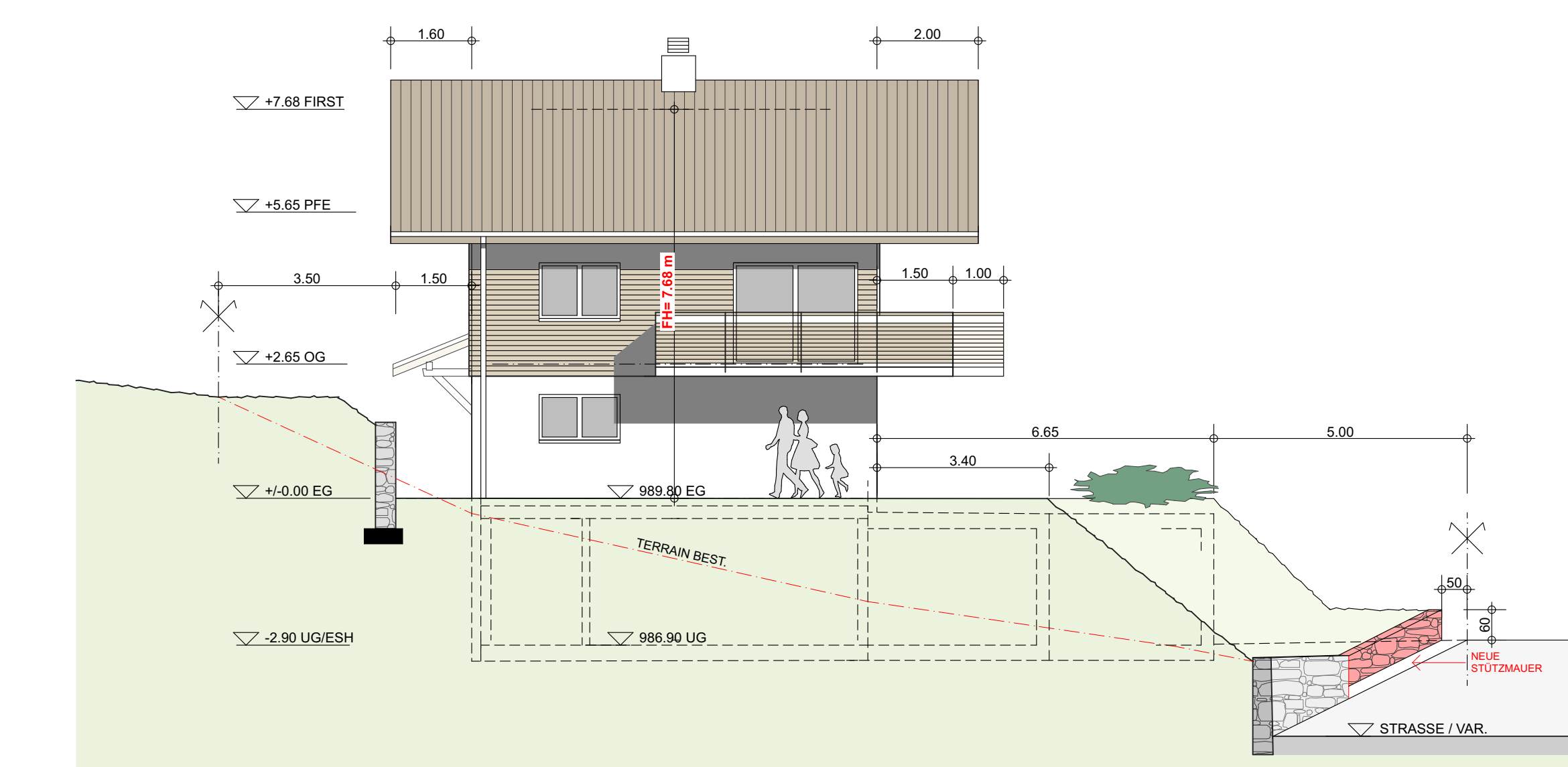
GALERIE



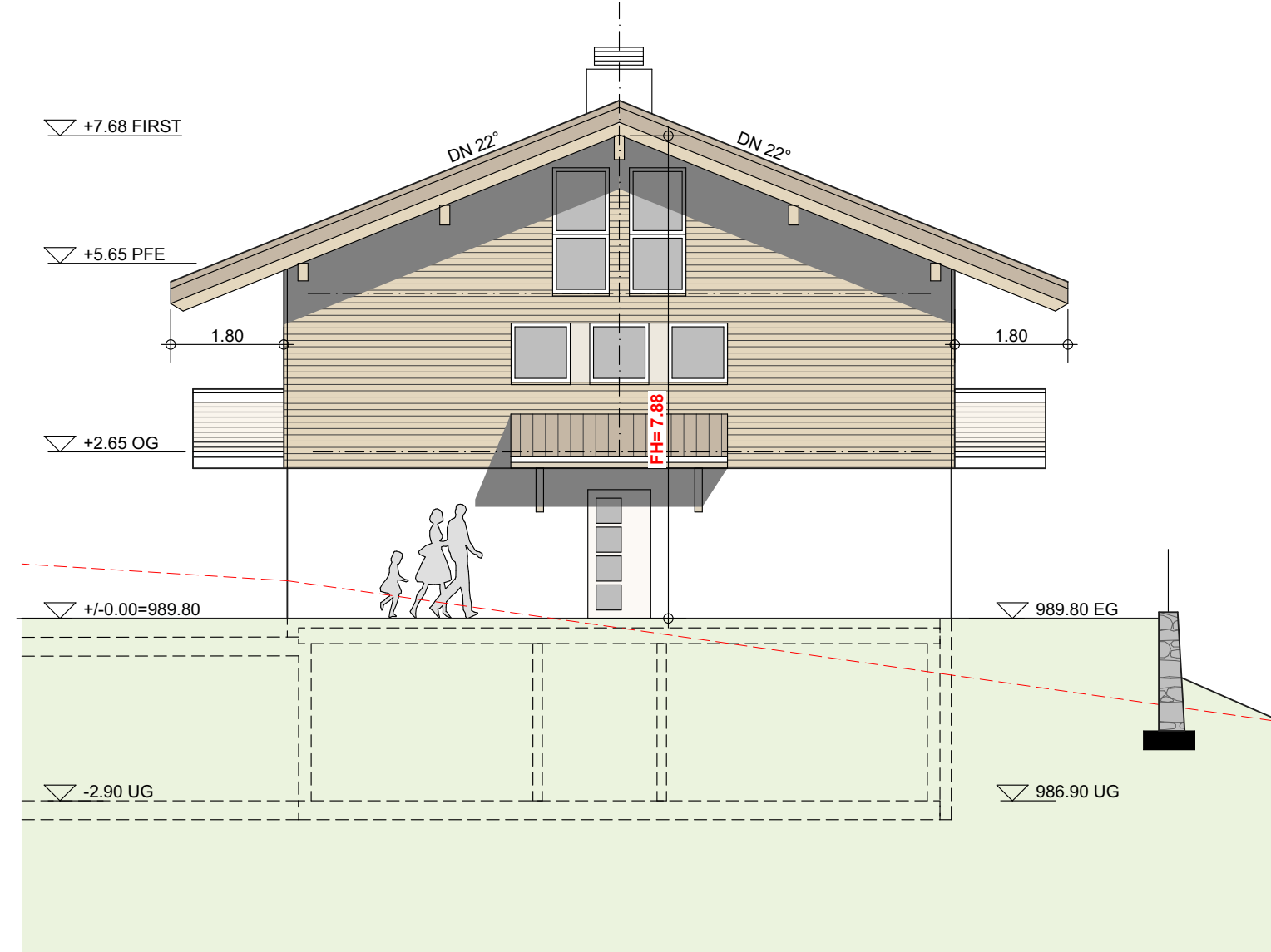
OSTFASSADE



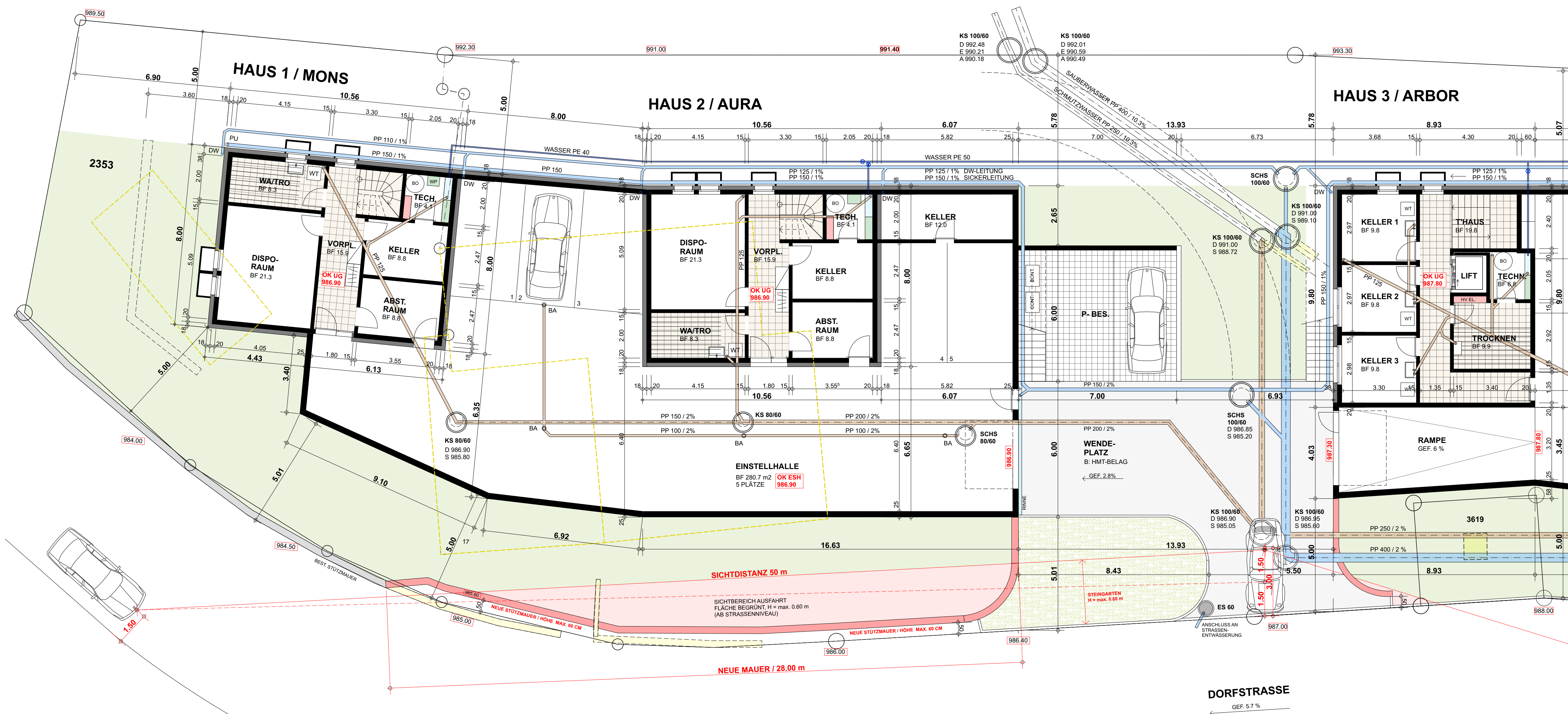
SÜDFASSADE



WESTFASSADE



NORDFASSADE



DORFSTRASSE
 GEF. 5.7 %